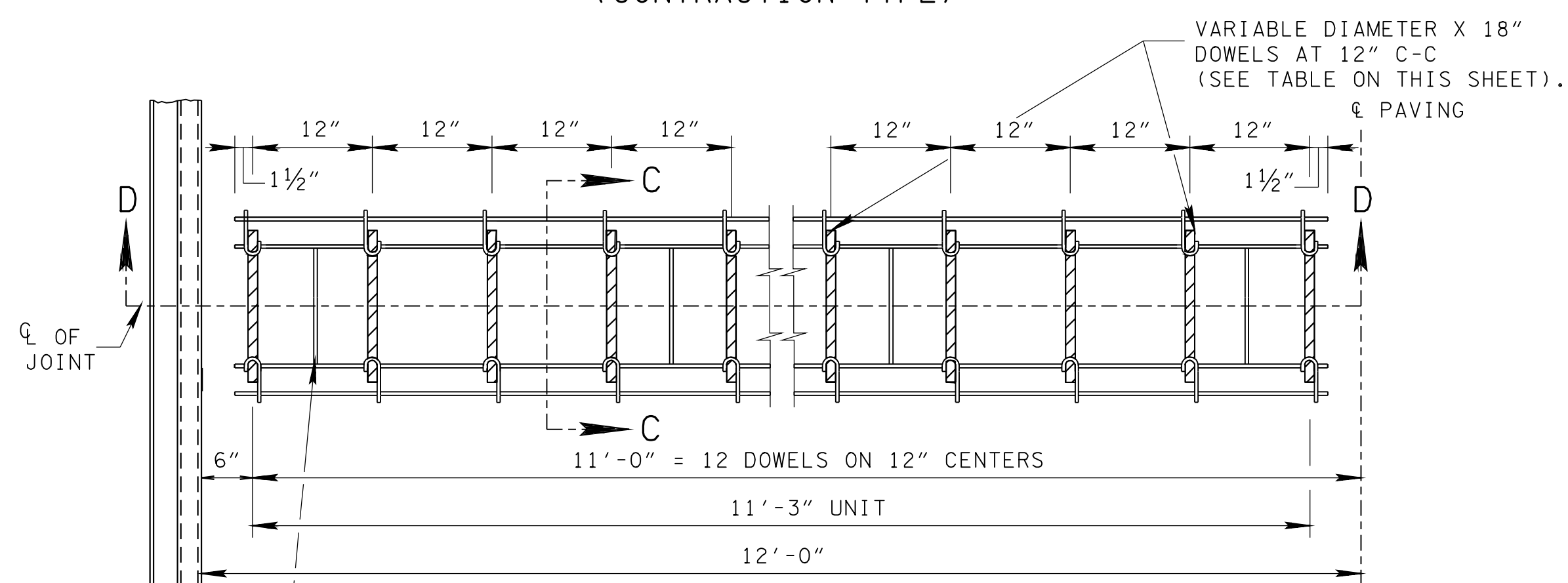
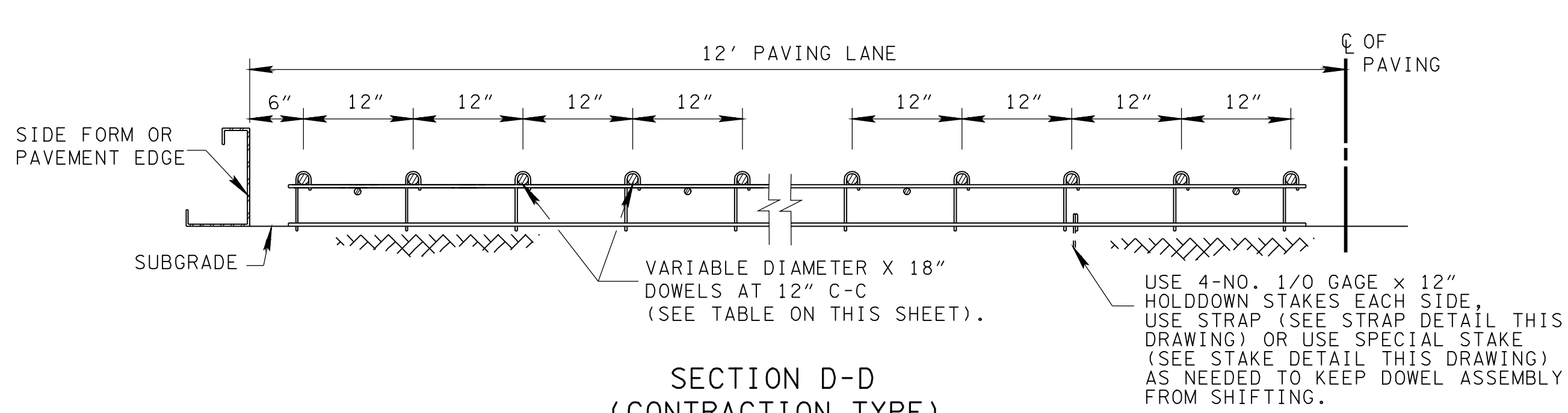
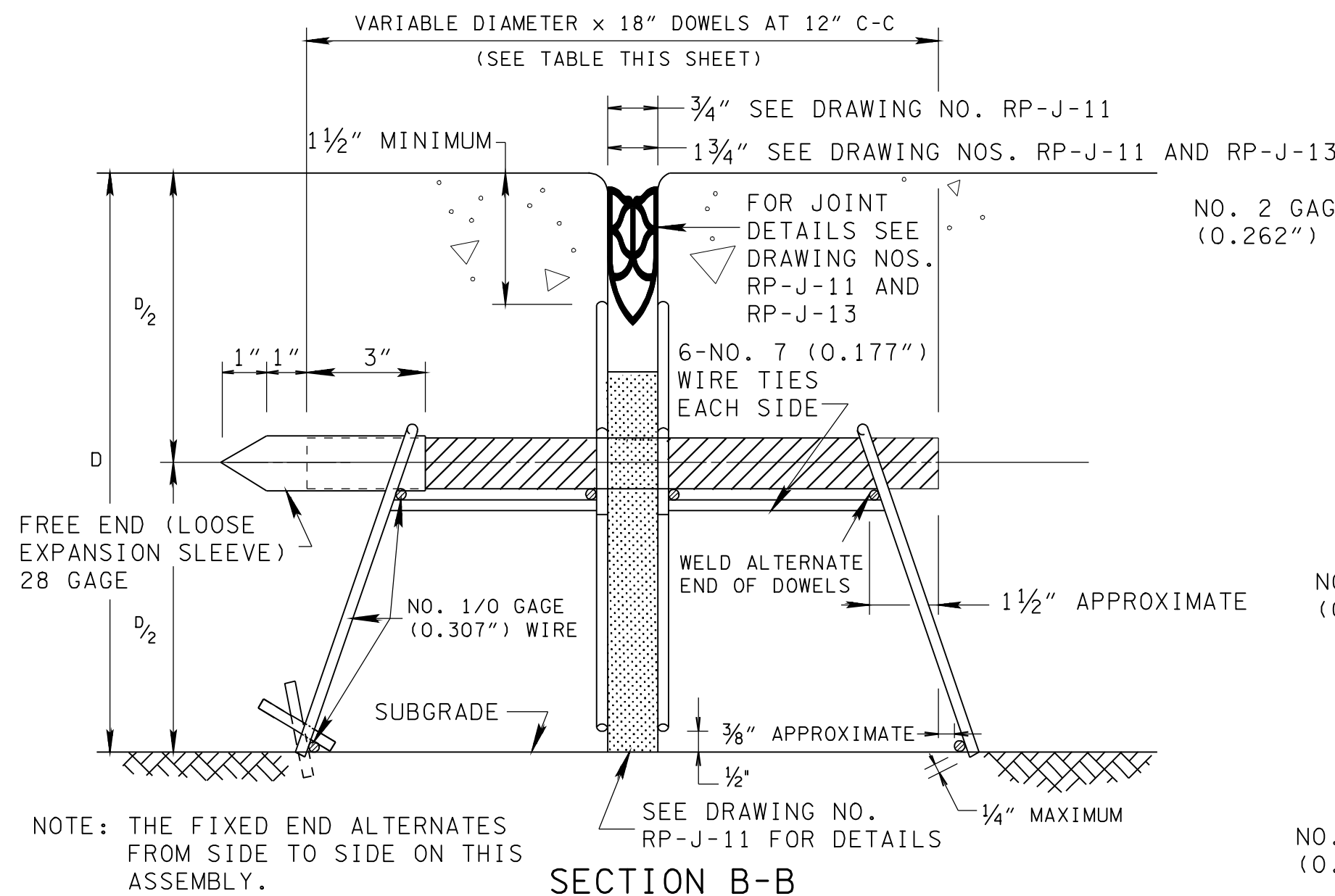


PLAN
WELDED DOWEL ASSEMBLY EXPANSION
TYPE U

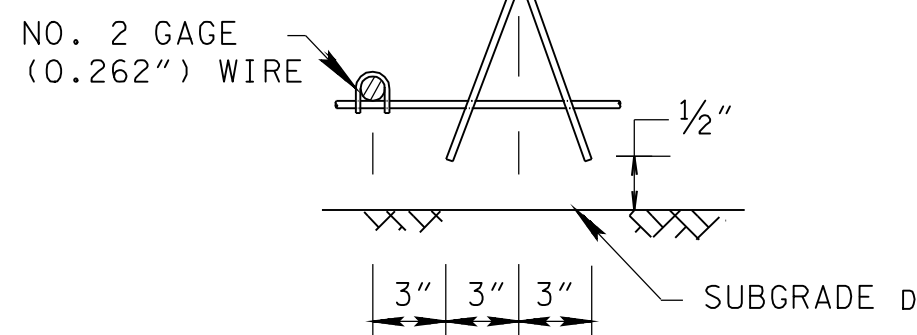


PLAN
WELDED DOWEL ASSEMBLY CONTRACTION
TYPE U

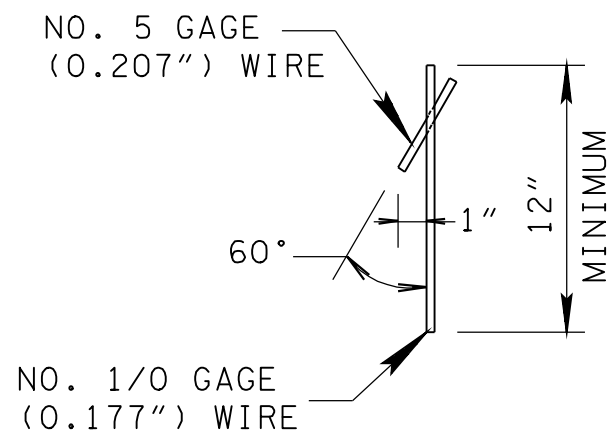
SPACER: 4-NO. 7 (0.177") WIRES
PER UNIT,



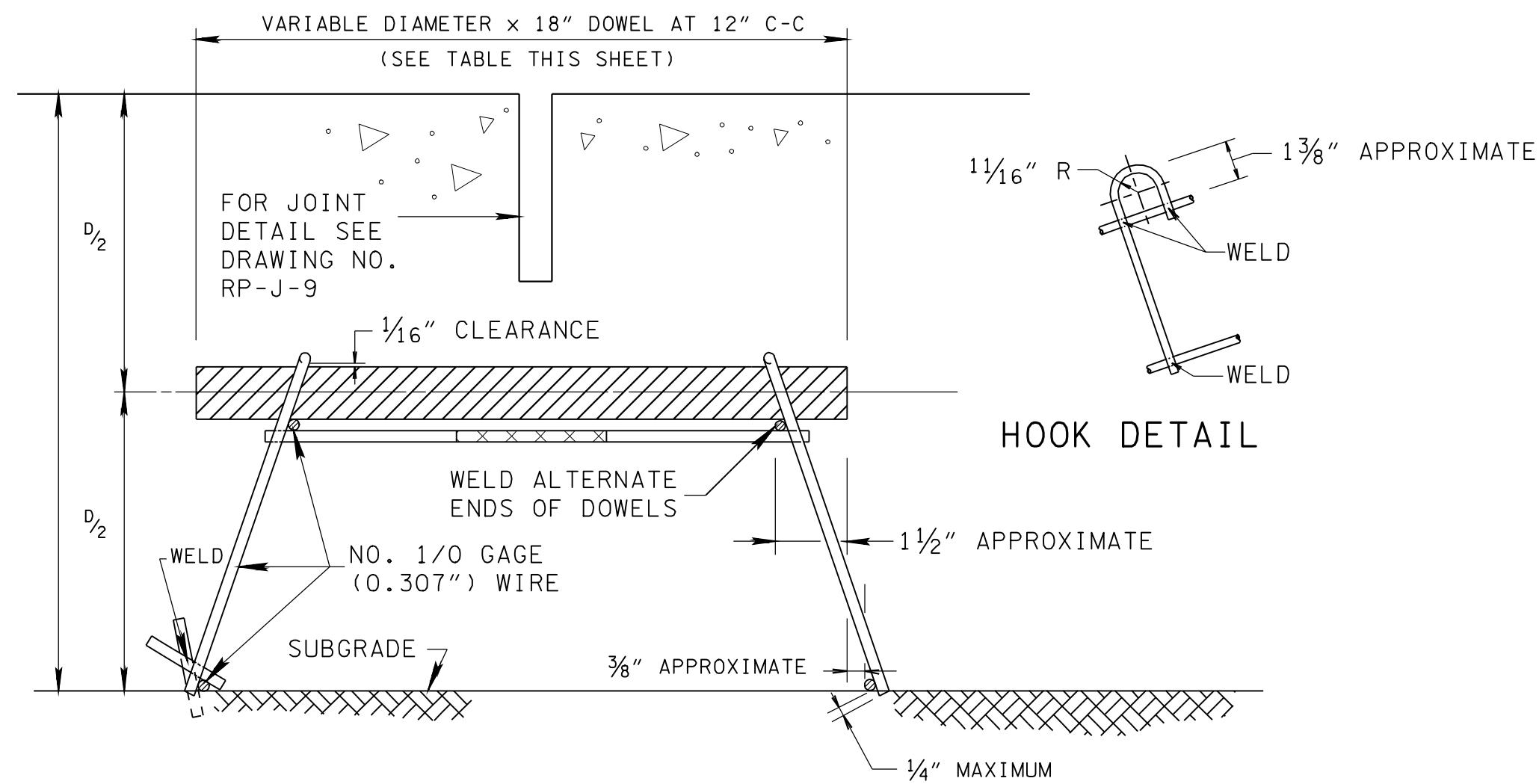
SECTION B-B
(EXPANSION TYPE)



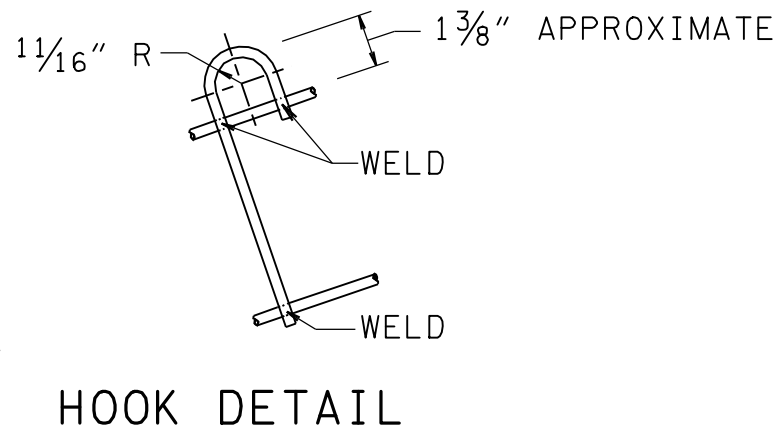
JOINT HOLDER



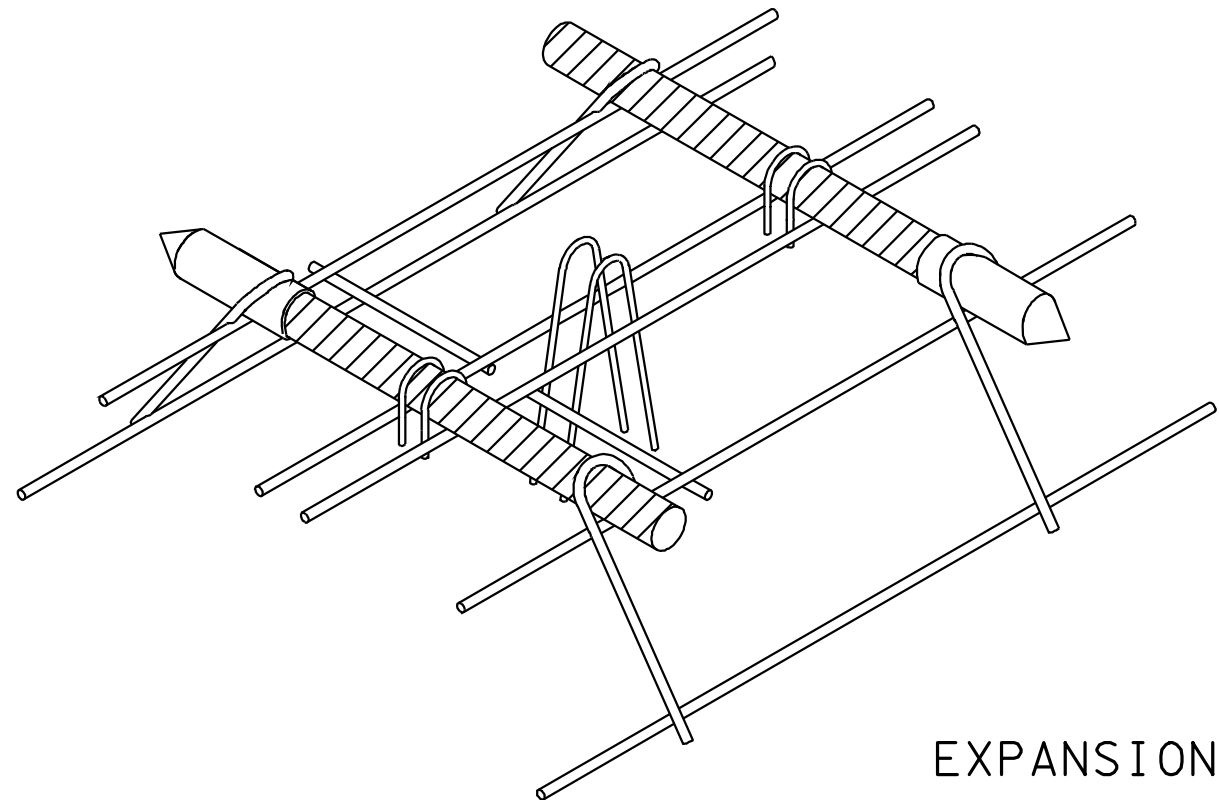
STAKE DETAIL



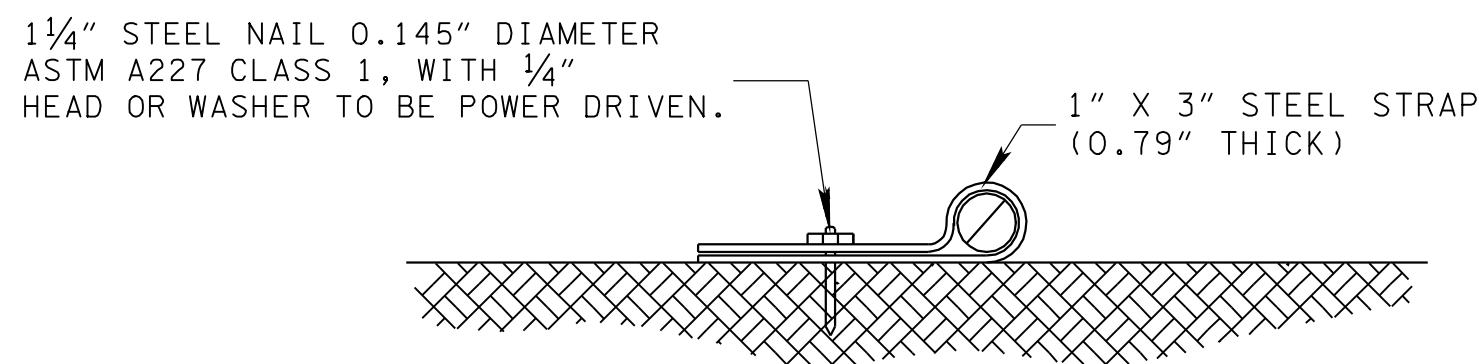
SECTION C-C
(CONTRACTION TYPE)



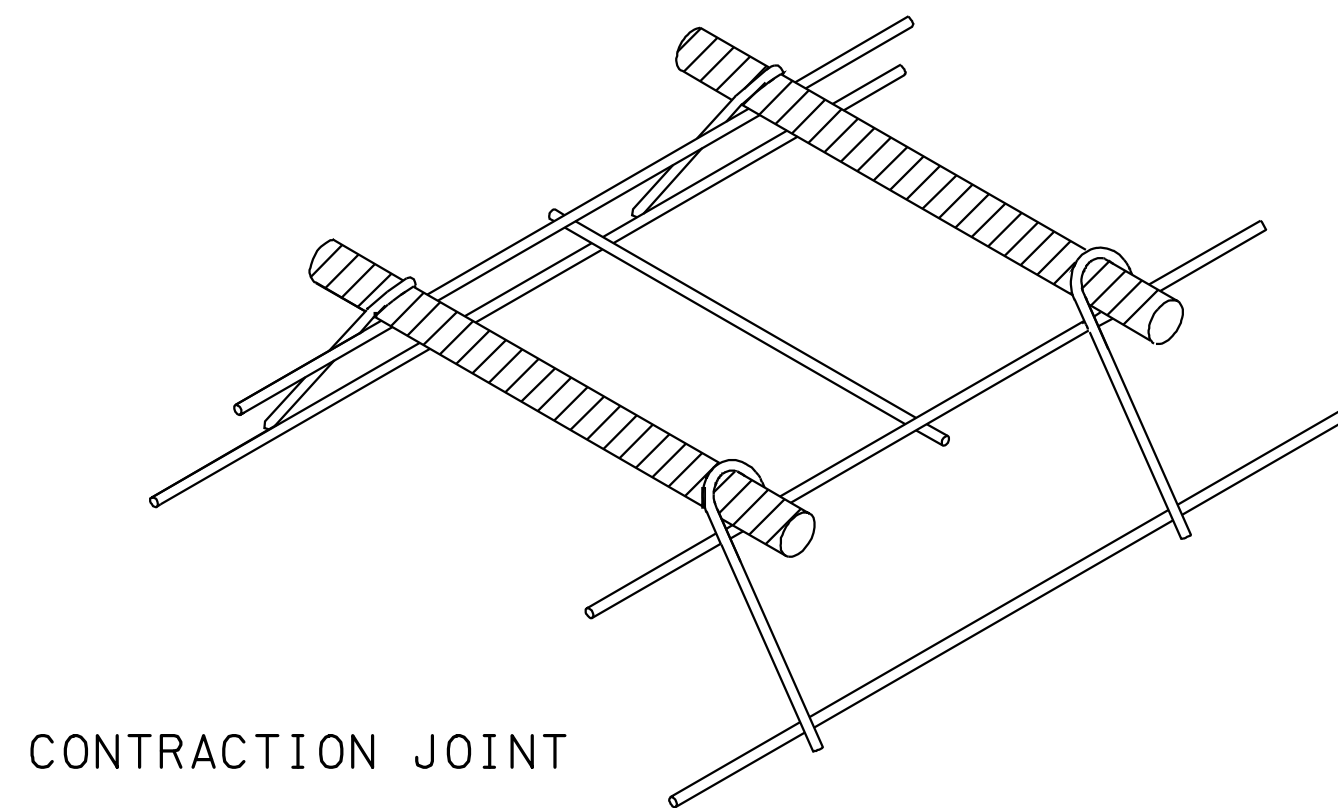
HOOK DETAIL



EXPANSION JOINT



STRAP DETAIL



CONTRACTION JOINT

DOWEL BAR SIZE TABLE	
PAVEMENT THICKNESS (INCHES)	BAR DIAMETER (INCHES)
8-10	1 1/4"
>10	1 1/2"

CROSS-REFERENCE DRAWING FOR THIS
SHEET: RP-J-9, RP-J-11, RP-J-13,
RP-J-17 AND RP-J-18.

GENERAL NOTES

- DOWEL ASSEMBLY DEVICES OTHER THAN SHOWN ON DRAWING NOS. RP-J-17, RP-J-18 AND RP-J-19 MAY BE USED FOR SUPPORTING DOWELS AT EXPANSION AND CONTRACTION JOINTS.
- DOWEL ASSEMBLY DEVICES SHALL BE SO CONSTRUCTED AS TO HOLD THE DOWEL BARS FIRMLY IN POSITION PARALLEL TO THE SURFACE AND CENTERLINE OF THE PAVEMENT SLAB DURING THE PLACING OF CONCRETE.
- DOWEL ASSEMBLY DEVICES SHALL BE OF SUCH DESIGN AS TO PERMIT UNRESTRICTED MOVEMENT OF THE PAVEMENT SLAB.
- DOWEL ASSEMBLY DEVICES TO BE USED MUST BE APPROVED BY THE ENGINEER PRIOR TO THEIR USE.
- SEE STANDARD SPECIFICATIONS FOR ROAD AND BRIDGE CONSTRUCTION, SECTION 501-PORTLAND CEMENT CONCRETE PAVEMENT FOR DOWEL ASSEMBLY DEVICES. ALSO SEE APPLICABLE SPECIAL PROVISIONS.
- DOWEL ASSEMBLY DEVICES ARE TO BE FURNISHED IN SECTIONS WITH SUITABLE LENGTHS FOR VARIOUS WIDTHS OF PAVEMENT.
- ONE OF THE ALTERNATE DOWEL ASSEMBLY DEVICES WILL BE REQUIRED AT EACH EXPANSION JOINT WITH LOAD TRANSFERS UNLESS A BULKHEAD IS USED. SEE DRAWING NOS. RP-J-17, RP-J-18 AND RP-J-19 FOR ALTERNATE DOWEL BAR AND DOWEL ASSEMBLY DETAILS AND SPECIFICATIONS.
- SEE DRAWING NOS. RP-J-9 AND RP-J-11 FOR ADDITIONAL INFORMATION NOT SHOWN ON THIS SHEET.

MINOR REVISION -- FHWA
APPROVAL NOT REQUIRED.

STATE OF TENNESSEE
DEPARTMENT OF TRANSPORTATION

DOWEL
ASSEMBLY
DEVICES

RP-J-19

REV. 4-18-90: CHANGED DOWEL
BAR LENGTH FROM 15" TO 18".
ELIMINATED DOWEL BAR ASSEMBLY
DETAILS FOR SKEWED INSTALLATIONS.

REV. 3-20-91: REDREW AND
REORGANIZED SHEET. ADDED
DOWEL BAR SIZE TABLE. CHANGED
REFERENCE FOR DOWEL BAR SIZE
FROM 1 1/4" TO VARIABLE DIAMETER.

REV. 7-29-93: REMOVED REFERENCE
TO THE ORIGINAL MANUFACTURE'S
NAME AND CROSS-REFERENCE TO
DRAWING NO. RP-J-19. ADD CUTTING
OF TIE WIRE NOTE TO CONTRACTION
JOINT PLAN VIEW AND SECTION C-C
VIEW.

REV. 12-18-94: CHANGED DRAWING
NO. FROM RP-J-21 TO RP-J-19.
CHANGED GENERAL NOTE (A).

REV. 10-26-00: CHANGED WIDTH AND
DEPTH OF SAWED GROOVED CONTRACTION
JOINT.

REV. 10-21-05: DELETED NOTES
ABOUT CUTTING OF TIE WIRE
AFTER STAKING.

REV. 2-2-12: CHANGED DOWEL
BAR TABLE.